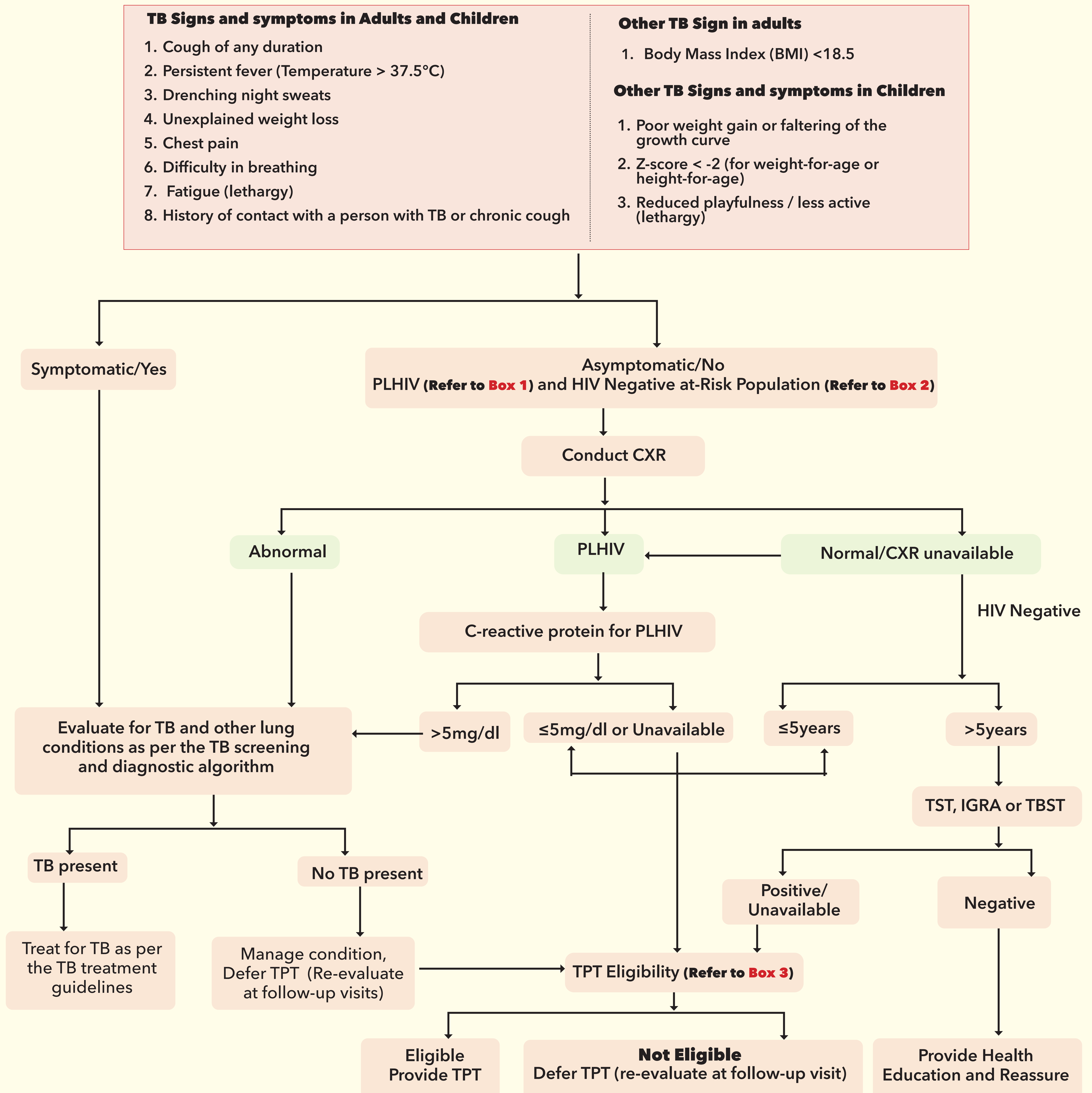


# Tuberculosis Preventive Treatment Algorithm



## Box 1: People living with HIV (PLHIV)

- Adults and adolescents (>10yrs) regardless of ARV, pregnancy, previous TB treatment, immunosuppression, and availability of tests for TB infection.
- Infants aged ≤12 months who are contacts of a person with bacteriologically confirmed pulmonary TB
- Children >12 months in high TB burden settings
- All PLHIV who successfully complete treatment for TB disease.

## Box 2: HIV Negative at-risk population

- Contacts of Bacteriologically confirmed pulmonary TB
  - Children ≤5 years; individual >5 years; exposed to MDR TB
- Other at-risk groups includes
- People who have silicosis, those on anti-TFN treatment or dialysis, organ or hematological transplant
  - Prisoners, HCW, immigrants from high TB burden countries, homeless people, and people who use drugs.

## Box 3: TPT Eligibility assessment

- Assess for adherence
- Assess for active Disease
- Assess for Adverse Reaction

**NB: The absence of TST, MBTST and chest X-Ray should not hinder initiating TPT if the client is asymptomatic**